

Building a Healthy Foundation for The Gator Nation

UF Student Health Care Center

*Providing the Services
Students, Faculty & Staff
Need to Stay Healthy!*



(352) 392-1161

www.shcc.ufl.edu

UF Student Health Care Center

facebook.com/ufshcc • twitter.com/ufshcc

UNIVERSITY of
FLORIDA

UF Student Health Care Center Welcome Aboard!

Thank you for choosing to enrich your education at the Student Health Care Center (SHCC)! Following is some basic information.

- The SHCC is accredited by:
 - **Accreditation Association for Ambulatory Health Care (AAAHC)**
 - **College of American Pathologists (CAP)**
- The SHCC is an institutional member of:
 - **American College Health Association (ACHA)**



(352) 392-1161

www.shcc.ufl.edu

UF Student Health Care Center

facebook.com/ufshcc • twitter.com/ufshcc

UNIVERSITY of
FLORIDA

UF Student Health Care Center

Who We Are

The SHCC is a primarily appointment-based outpatient center serving University of Florida students, faculty and staff.

- MDs, PAs, ARNPs, RNs and many other health specialists make up our 200+ staff. (MDs are also faculty in the College of Medicine.)
- In addition to primary care, we provide:
 - Specialty services (*main campus*)
 - Occupational medicine services (*SHCC@Shands*)
 - Workers comp services



(352) 392-1161

www.shcc.ufl.edu

UF Student Health Care Center

facebook.com/ufshcc • twitter.com/ufshcc

UNIVERSITY of
FLORIDA

UF Student Health Care Center Where We're Located

The SHCC has one main location and multiple satellite locations.

Regular hours are M-F, 8a-5p in fall/spring (*with some areas open Sun, 12-4p*) and M-F, 8a-4:30p in summer. Check <http://shcc.ufl.edu> for current hours and breaks.

- **Main campus:** 1 Fletcher Drive
- **SHCC@Shands – Primary care and Occ. Med.:** Health Science Center, Dental Towers, Room D2-49



(352) 392-1161

www.shcc.ufl.edu

UF | Student Health Care Center

facebook.com/ufshcc • twitter.com/ufshcc

UNIVERSITY of
FLORIDA

UF Student Health Care Center

What We Do

General Medical Care/Primary Care

- Students assigned to 1 of 6 medical teams after beginning classes
 - **BONUS:** Students see the same faces throughout college, providing important continuity of care
 - Most basic office visits are covered by the tuition-included student health fee
- Acute care and trauma walk-ins

Ancillary Services

- **Pharmacy**, including retail store of health and beauty items and snacks
- **Radiology/EKG**
- **Laboratory**



(352) 392-1161

www.shcc.ufl.edu

UF Student Health Care Center

facebook.com/ufshcc • twitter.com/ufshcc

UNIVERSITY of
FLORIDA

UF Student Health Care Center

What We Do

Women's Clinic

- Pap smears, pelvic exams
- Breast exams, self-examination how-to
- STD/STI testing
- Counseling on: women's health issues, contraceptive options, sexual health
- Pregnancy testing, outside referrals



HERE FOR THE GUYS, TOO!

- Testicular exam info. and more

Nutrition Services

- FREE nutrition counseling with our registered dietician
- Assessment, nutrition recommendations and follow-up
- "Gator Grub" cookbook for busy student lifestyles
- Locations of local farmers' markets

(352) 392-1161

www.shcc.ufl.edu

UF | Student Health Care Center

facebook.com/ufshcc • twitter.com/ufshcc

UNIVERSITY of
FLORIDA

UF Student Health Care Center

What We Do

Special Clinics

- Allergy injection therapy
- Immunizations
- Flu shots
 - Typically FREE for students
- Travel counseling and vaccinations



Dermatology

- FREE mole screening/sun damage education by appt. in fall/spring



(352) 392-1161

www.shcc.ufl.edu

UF | Student Health Care Center

facebook.com/ufshcc • twitter.com/ufshcc

UNIVERSITY of
FLORIDA

UF Student Health Care Center

What We Do

Sports Medicine

Students can see trained sports medicine physicians by appt.



- No out-of-pocket charge for evaluations!
 - Charges assessed for things like X-rays, medical equipment and physical therapy

Physical Therapy*

- Students can see trained physical therapists by appt. with referral
- Therapy available for short-term care of acute injuries



*PT services provided through contract UF Health

(352) 392-1161

www.shcc.ufl.edu

UF Student Health Care Center

facebook.com/ufshcc • twitter.com/ufshcc

UNIVERSITY of
FLORIDA

UF Student Health Care Center Dress Code

We take pride in what we do! By dressing appropriately for your area, you reflect positively on the SHCC.

- Medical teams: Scrubs or business casual attire with closed-toe shoes
- Other areas: Business casual attire
 - Jeans allowed on Fridays and some special occasions ONLY

Questions? Ask your preceptor.



(352) 392-1161

www.shcc.ufl.edu

UF | Student Health Care Center

facebook.com/ufshcc • twitter.com/ufshcc

UNIVERSITY of
FLORIDA

UF Student Health Care Center Confidentiality

The SHCC follows the highest standards when it comes to keeping patient information confidential. Please make sure you are following these guidelines as well.

- Remember the confidentiality agreement
- [Review the Notice of Privacy Practices](#)
- [Review the trainee manual](#)
for more information



Questions? Ask your preceptor.

(352) 392-1161

www.shcc.ufl.edu

UF | Student Health Care Center

facebook.com/ufshcc • twitter.com/ufshcc

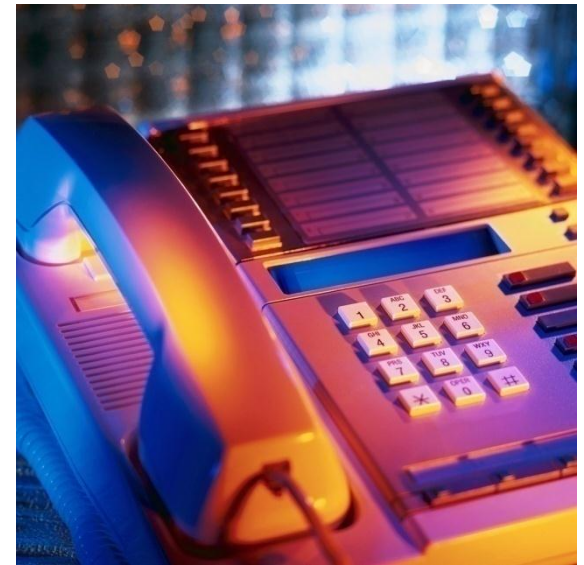
UNIVERSITY of
FLORIDA

UF Student Health Care Center Phone System

All SHCC phones are monitored by a computer system. Please make sure you are using them appropriately.

- **Find internal SHCC dept. extensions list here:**
R drive → SHCC Employee - Phone Lists → [SHCC VOIP Phone List.xlsx](#)
- 5-digit UF numbers may be entered directly
- Enter 9 first for an outside line
- **DO NOT DIAL 411!**

Questions? Ask your preceptor.



(352) 392-1161

www.shcc.ufl.edu

UF | Student Health Care Center

facebook.com/ufshcc • twitter.com/ufshcc

UNIVERSITY of
FLORIDA

UF Student Health Care Center Computer Use

The SHCC uses EPIC Electronic Health Record (EHR) system.
Please ask your preceptor about appropriate use of this system.

- **Everyone is required to follow the university's "Acceptable Use of Information Technology Resources" policy:**
<http://www.it.ufl.edu/policies/aupolicy.html>

Questions? Ask your preceptor.



(352) 392-1161

www.shcc.ufl.edu

UF Student Health Care Center

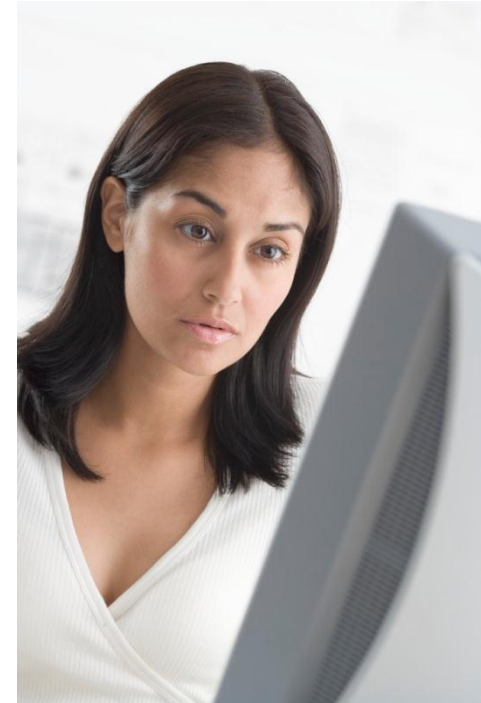
facebook.com/ufshcc • twitter.com/ufshcc

UNIVERSITY of
FLORIDA

UF Student Health Care Center Computer Use

To access the EHR system:

- You will need to work with SHCC ITS and your preceptor to determine appropriate access to the EPIC system.
- Your preceptor will train you on the EHR system.



Questions? Ask your preceptor.

(352) 392-1161

www.shcc.ufl.edu

UF | Student Health Care Center

facebook.com/ufshcc • twitter.com/ufshcc

UNIVERSITY of
FLORIDA

UF Student Health Care Center Computer Assistance

If in doubt when it comes to something computer-related, contact the **SHCC IT Department Help Desk: 273-4530**

Helpful tips:

- **Save ONLY to network drives, NOT the C drive;** network drives are backed up every night
- **Always use safe e-mail practices when checking from an off-site location:** <https://mail.ufl.edu/>

Questions? Ask your preceptor.



(352) 392-1161

www.shcc.ufl.edu

UF | Student Health Care Center

facebook.com/ufshcc • twitter.com/ufshcc

UNIVERSITY of
FLORIDA

UF Student Health Care Center Customer Service Is No. 1

A positive attitude shows our customers that we care!

Whether working with patients, SHCC employees, other UF departments or the community, please always strive to provide service with a smile.

Welcome to the SHCC! We're happy to have you.

Want more detailed information? [Review the trainee manual.](#)



(352) 392-1161

www.shcc.ufl.edu

UF | Student Health Care Center

facebook.com/ufshcc • twitter.com/ufshcc

UNIVERSITY of
FLORIDA

UF Student Health Care Center Additional Information

Health-related Campus Resources:

Counseling & Wellness Center

<http://www.counseling.ufl.edu/cwc>

Employee Assist. Program (EAP)

<http://eap.ufl.edu>

GatorWell Health Promotion

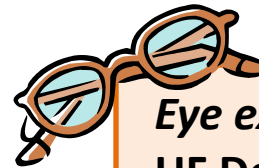
<http://gatorwell.ufsa.ufl.edu/>



Dental services: UF College of Dentistry

Phone: (352) 273-7950 / (800) 633-3953

<http://dental.ufl.edu/patient-care/>



Eye exams/glasses/contacts:

UF Department of Ophthalmology

Phone: (352) 273-7080

<http://www.eye.ufl.edu>

(352) 392-1161

www.shcc.ufl.edu

UF Student Health Care Center

facebook.com/ufshcc • twitter.com/ufshcc

UNIVERSITY of
FLORIDA